

MEAT TRAINING INSTITUTE: FOOD HYGIENE AND QUALITY ASSURANCE LAB. PRACTICALS

Submitted by dnduati on Sat, 2015-03-28 09:11

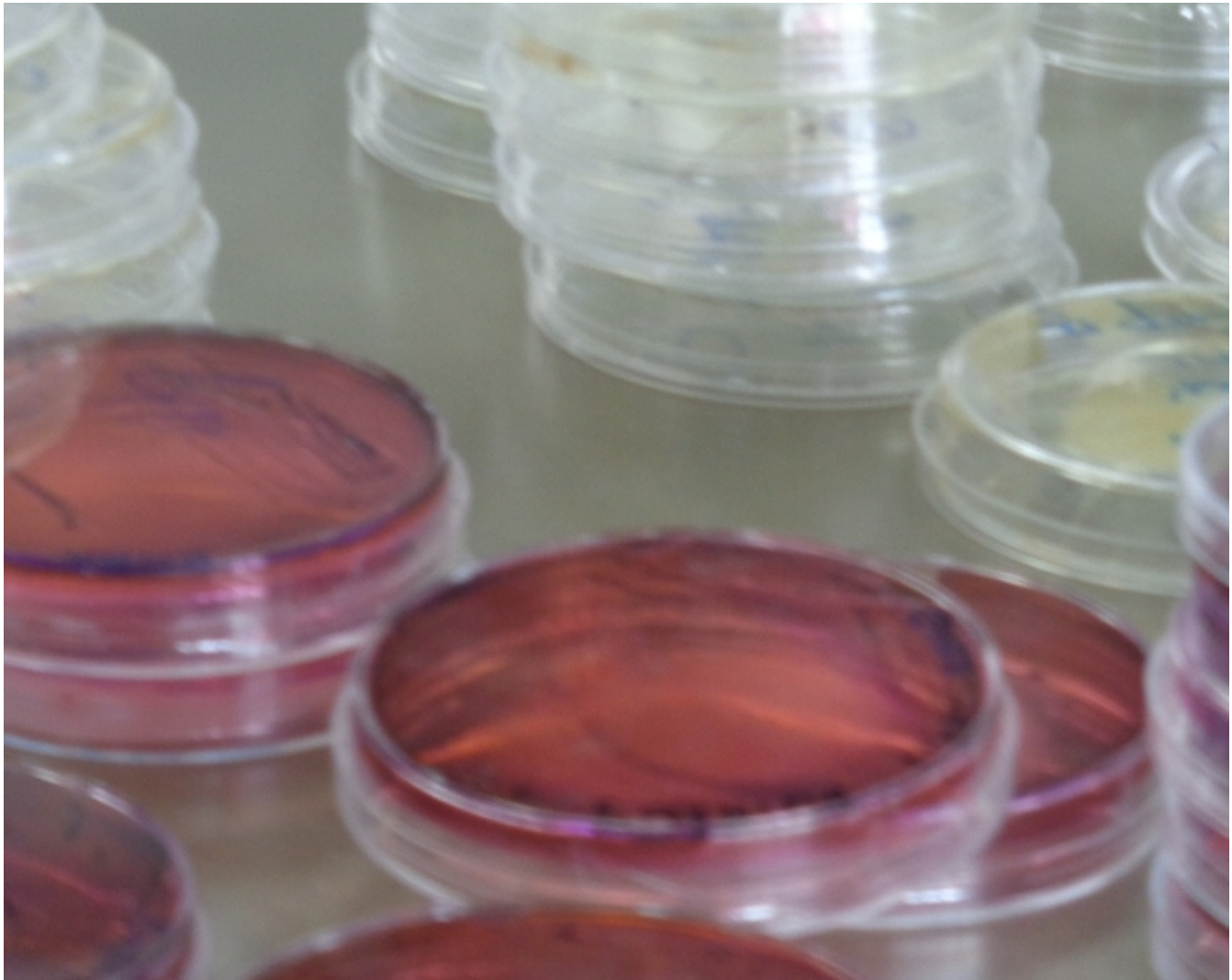
Date and time: Sat, 2015-03-28 08:47

Link to Gallery: [MEAT TRAINING INSTITUTE 23rd - 26th MARCH, 2015](#) [1]

Location / Venue:

Public Health Laboratory

Share: [Facebook](#) [2] [Twitter](#) [3] [Google Plus](#) [4] [Yahoo](#) [5] [LinkedIn](#) [6] [Digg](#) [7] [Delicious](#) [8]



Expiry Date: Tue, 2017-03-28 08:47

Contact Person:

Nduhiu Gitahi

Source URL: <http://phpt.uonbi.ac.ke/content/meat-training-institute-food-hygiene-and-quality-assurance-lab-practicals>

Links:

[1] <http://phpt.uonbi.ac.ke/category/image-galleries/meat-training-institute>

[2] <http://facebook.com/sharer.php?u=http://phpt.uonbi.ac.ke/content/meat-training-institute-food-h>

hygiene-and-quality-assurance-lab-practicals&u=MEAT+TRAINING+INSTITUTE%3A+FOOD+HYGIENE+AND+QUALITY+ASSURANCE+LAB.+PRACTICALS

[3] <http://twitter.com/intent/tweet?text=MEAT+TRAINING+INSTITUTE%3A+FOOD+HYGIENE+AND+QUALITY+ASSURANCE+LAB.+PRACTICALS&url=http://phpt.uonbi.ac.ke/content/meat-training-institute-food-hygiene-and-quality-assurance-lab-practicals>

[4] <https://plus.google.com/share?url=http://phpt.uonbi.ac.ke/content/meat-training-institute-food-hygiene-and-quality-assurance-lab-practicals>

[5] <http://bookmarks.yahoo.com/toolbar/savebm?opener=tb&u=http://phpt.uonbi.ac.ke/content/meat-training-institute-food-hygiene-and-quality-assurance-lab-practicals&t=MEAT+TRAINING+INSTITUTE%3A+FOOD+HYGIENE+AND+QUALITY+ASSURANCE+LAB.+PRACTICALS&d=%0A%09>

[6] <http://www.linkedin.com/shareArticle?url=http://phpt.uonbi.ac.ke/content/meat-training-institute-food-hygiene-and-quality-assurance-lab-practicals&mini=true&title=MEAT+TRAINING+INSTITUTE%3A+FOOD+HYGIENE+AND+QUALITY+ASSURANCE+LAB.+PRACTICALS&ro=false&summary=%0A%09&source=>

[7] <http://digg.com/submit?url=http://phpt.uonbi.ac.ke/content/meat-training-institute-food-hygiene-and-quality-assurance-lab-practicals&title=MEAT+TRAINING+INSTITUTE%3A+FOOD+HYGIENE+AND+QUALITY+ASSURANCE+LAB.+PRACTICALS>

[8] <http://www.delicious.com/save?v=5&noui&jump=close&url=http://phpt.uonbi.ac.ke/content/meat-training-institute-food-hygiene-and-quality-assurance-lab-practicals&title=MEAT+TRAINING+INSTITUTE%3A+FOOD+HYGIENE+AND+QUALITY+ASSURANCE+LAB.+PRACTICALS>